



PARENT HANDBOOK (II) ON LEARNING WITH A PERSONAL LEARNING DEVICE

LEARNING DIFFERENTLY WITH A PERSONAL LEARNING DEVICE

HOW WILL LEARNING BE
DIFFERENT WITH THE
PERSONAL LEARNING
DEVICE?

STARTING IT RIGHT

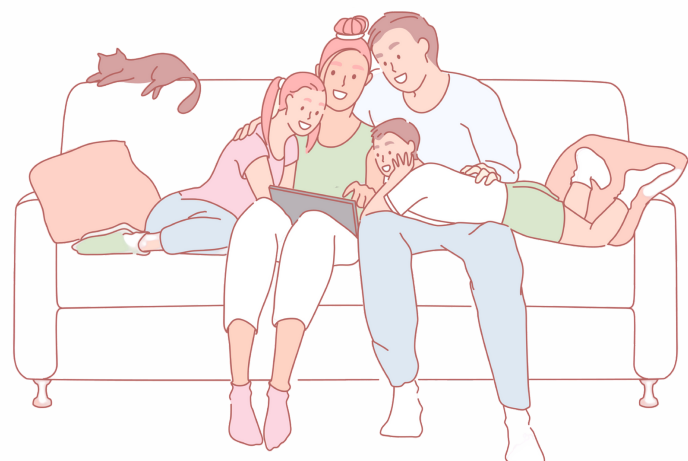
HOW CAN I HELP
EASE MY CHILD INTO
LEARNING WITH A
PERSONAL LEARNING
DEVICE?

PARTNERING SCHOOLS

HOW CAN I ACTIVELY
PARTNER MY CHILD'S
SCHOOL TO REINFORCE
GOOD DIGITAL HABITS
AT HOME?

SUPPORT YOU MAY NEED

HOW SHOULD I ACCESS
RESOURCES TO SUPPORT
MY CHILD IN THIS
DIGITAL LEARNING
JOURNEY?



How will learning be different with the Personal Learning Device (PLD)?

"... we will ensure that the PLD is an enabler for learning... our curriculum in schools will continue to provide a wide range of learning experiences, including a balanced proportion of technology-enhanced learning activities."

Minister of Education, Lawrence Wong, December 2020

Your child will be using the PLD for both in-class and out-of-class learning. This will prepare them for a technology-driven world.

Watch the video below to find out how your child will be learning differently with the PLD.



The video is also available at:

<https://go.gov.sg/tech-enabled-learning-scenarios-in-schools/>

Click [here](#) to hear what the experience was like for other parents!

The video is also available at: <https://go.gov.sg/parent-voxpath-1>

Device Management Application (DMA): Ensuring that your child learns effectively in a safe and conducive digital environment

Depending on the Operating System (OS) of your child's device, either of the following types of DMA will be installed on the device:

- ✓ Mobile Guardian (Chrome OS and Apple iOS)
- ✓ Filewave/Blocksi (Windows and Android OS)

The DMA supports learning in these 3 ways:

Mobile Device Management

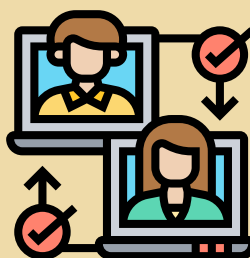
Facilitates the updating and management of the PLDs, protects PLDs from malicious software, and protects students from objectionable internet content



Classroom Management Service

Enables teachers to manage the students' use of the PLD during *lesson time to improve classroom management and support effective teaching and learning.

*Teachers will only monitor students' activities during lessons.



Usage Management

Enables the school and/or parents to better supervise and set helpful limits for students' use of PLDs after school



How can I help my child ease into learning with a Personal Learning Device?

START IT RIGHT!



It is never too late to establish norms and routines for device use. Establish clear expectations about the use of devices, and help your child to develop good digital habits at the onset. Try these strategies:



TALK ABOUT LEARNING ONLINE

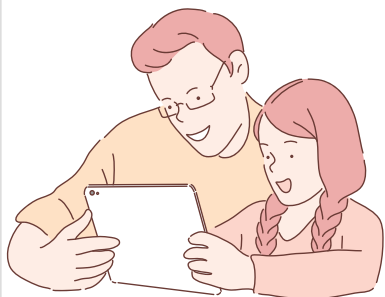
Talk with your child about your thoughts and concerns about learning with the PLD, and ask your child how they might want to use it for learning.

You might also want to ask your child to share with you some tips they have learnt in school about keeping safe online and have a conversation about that!



SET EXPECTATIONS AND ROUTINES TOGETHER

It is important to set common expectations from the onset. Establish common routines as a family to ensure a healthy balance of online and offline activities, e.g. no use of devices during mealtimes, stop using devices at least 1h before bedtime.



PROVIDE A LEARNING SPACE FOR YOUR CHILD

Provide a quiet and conducive environment for your child to use their PLD.

Discourage your child from eating or drinking in their learning space to minimise the possibility of spillage of food and water on the PLD.



How can I actively partner my child's school to reinforce good digital habits at home?

Our children do best when schools and parents work hand in hand to support them. Your child will be learning digital literacy skills that will help them to learn effectively with technology, and parents can support this by reinforcing good practices and habits at home.



School

Your child will receive personalised feedback for their learning tasks that can be accessed online.



Home

- ✓ **Urge your child to look at the feedback for their assignments and work on areas for improvement.**
- ✓ **Encourage them to re-attempt questions or clarify the feedback given with the teacher. Advise your child to access the SLS User Guide to find out how to post questions to their teachers.**

*The Singapore Student Learning Space (SLS) is accessible by all teachers and students in the national school system. Your child will be accessing some of their learning resources on this platform.



School

Your child will be able to annotate and take notes on their device during lessons.



Home

- ✓ **Encourage your child to take notes using text, image, audio and videos. This will help your child to better understand and remember concepts.**
- ✓ **Remind your child that they can exchange their notes with their peers to learn from each other. Direct your child to this webpage to learn more.**





School

Your child will be given opportunities to extend their learning based on their interests and needs by accessing information online, particularly on home-based learning days.



Home

- ✓ Does your child wish to develop a hobby such as playing an instrument, sketching or playing a certain sport? Encourage your child to explore online resources, and have a conversation with your child about their progress.
- ✓ Encourage your child to share their learning with their peers. They can share their tips or difficulties encountered in the SLS discussion forum to help others learn, and to seek help.



School

Your child will be taught different ways to show what they have learnt using their PLD. This may include presentation slides, infographics, audio, or videos clips.



Home

- ✓ Encourage your child to explore using digital tools for personal projects, such as creating videos or photo collages to commemorate a family outing.
- ✓ Remind your child to be respectful of copyright should they post the digital products online. Direct your child to explore this SLS lesson for some tips.

